

'40s FAMILY JOURNAL

Look in the Hard Times & Homefront sections



FIND THESE THINGS:

KIMONO

HOOVERVILLE SHACK

POTATO PICKER'S BELT

WOMAN RIVETER

SHIPYARD WORKER'S LEATHER VEST

MONOPOLY GAME

B-17 FRAME

BONUS:
FINISH THE STORY
BY ANSWERING
THESE QUESTIONS:

? When your father comes home, where will he work?

? Will your mother keep her job building airplanes?

? Will your friend, Henry Hashimoto, come home?

• YOUR MISSION: TO WRITE THE STORY OF A WASHINGTON FAMILY

• 1934: Your family lives in Puyallup, but your father is out of work. He leaves for Coulee City to get work on the _____.

• 1941: The Japanese military bombs
A. LOS ANGELES B. PEARL HARBOR C. SEATTLE

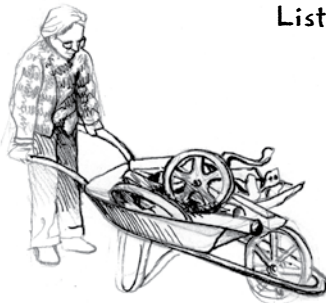
• and the United States enters _____.
• Your father and older brother enlist to fight for their country.

• 1942: Your Japanese-American neighbors, the Hashimotos, are forced to go to an _____ . It is sad to see your friends taken away.

• 1942: Your mother and your oldest sister take jobs as riveters at
A. KAISER SHIPYARD B. BOEING C. A GROCERY STORE .
• They help build _____.

• 1943:
• After school, you and your younger sister collect _____
• to do your part for the war effort.

List the things you collect:



1. _____
2. _____
3. _____

• 1944: For people on the homefront, dairy products, gasoline, meat, and tires are all _____ .

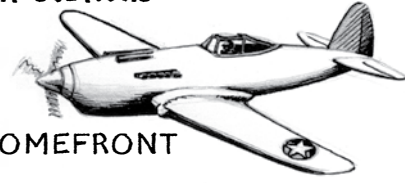
• 1945: Two bombs are dropped by the U.S. on _____ .

This helped end the war.

HARD TIMES & HOMEFRONT I

WARTIME WORK

Look in the Hard Times & Homefront sections



FIND THESE THINGS:

LEATHER VEST

SCRAP USE POSTER

WPA BUTTON

SAFETY BOOTS

CLECO GUN

WAR RATION BOOK

2 KAISER ID BADGES

WARTIME WORKER FLIPBOOK

BONUS:
What is a "Bucker-Upper"?

YOUR MISSION:

TO FIND WORK ON THE HOMEFRONT

1. Name three ways people on the homefront supported the war effort:

2. What kinds of jobs did women assume during World War II?

Why?

3. List four difficulties women workers encountered:

4. What other minority groups experienced employment opportunities during WWII? Where did they work?

5. What did the woman shipyard worker wear?

6. Who was "Rosie the Riveter"?

- A. SHIPYARD WORKER B. WOMAN AIRPLANE BUILDER
- C. CARPENTER

7. Who owned the equipment issued from Boeing's toolroom? Why?

FINAL PROJECT:

Describe what women did after the war and how their participation as wartime workers has affected women's roles in the workplace ever since.



HARD TIMES & HOMEFRONT II

SURVIVAL NOTES

Look in the Hard Times & Homefront sections



FIND THESE THINGS:

GINTHER PAINTINGS

RAIN SLICKER

PLUTONIUM SPHERE

CRATE PAINTING

JAPANESE-AMERICAN FLIPBOOK

RATION TOKENS

"WARTIME APPEAL"

WPA PIN

OATH OF ALLEGIANCE

FINAL PROJECT:

Select one of the topics presented here and write a fact-based fiction story about it.

YOUR MISSION:

TO SURVIVE IN HARD TIMES & WARTIME

1931: You've lost your job, have no money, and no where to go. Describe the men you meet when you move into a Hooverville.

a. Where do they come from?

b. Why are they there?

c. Describe the living conditions:

d. Where are some of these Hoovervilles located in Washington?

1934: The Word is Out...

Jobs project east of the mountains—you take the train to Wilbur to find work.

a. What is the project?

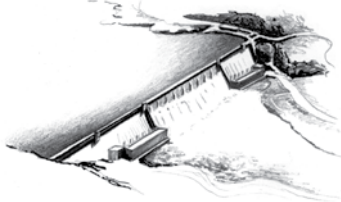
b. What is its purpose?

c. What would be so great about becoming a WPA worker?

1941: You are a Japanese-American farmer living on Bainbridge Island when word of a Japanese military attack on Pearl Harbor, Hawaii is released. Describe what happens to you and your family during the next two years.

1943: Too young to go to war, you do your bit by heading up scrap drives. What do you collect and how is it used?

1945: You've been working on a secret project in Hanford, Washington. How and when was the secret revealed?



HARD TIMES & HOMEFRONT III