

# Prehistoric Notes

Look in **Shaping a New World**

## FIND THESE THINGS:

- Mount St. Helens ash
- Palouse Falls
- Petrified wood
- Quartz-covered inkwell
- "The Feathers"
- Perch fossil

## Try to find the geologic phrases hidden in the word search

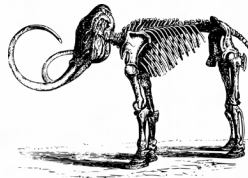
N G F V B U R R  
I O K L L V E L  
U P I I O I C A  
M D Z T C O R V  
O M G A P T D A  
N H L F T U E S  
A G C P I O R D  
C I C E A G E E  
L E Q S T O G B  
O I B I C I U Z  
V V Q V J O Y N  
P E Q K M F R Z  
S Q A C H R A D  
B Q G B T Q M B

- Eruption
- Floods
- Glacier
- Ice Age
- Lava
- Volcano

The mastodon tooth is pointed for eating what types of food?

The mammoth tooth is flat for grinding up what?

Choose one of the two teeth to draw. Be sure to include details!



Look at the shapes of Mt. Rainier and Mt. St. Helens. How are they different? What do those differences tell you?

What very rare type of petrified wood is found in Washington?

What do we call giant rocks left behind when the ice sheets receded?

Draw a line to connect the Washington landmark to the geologic force that created it:

Puget Sound

Crashing waves

Potholes Coulee

Glaciers

Manresa Grotto

Windblown loess

Palouse Fields

Floods

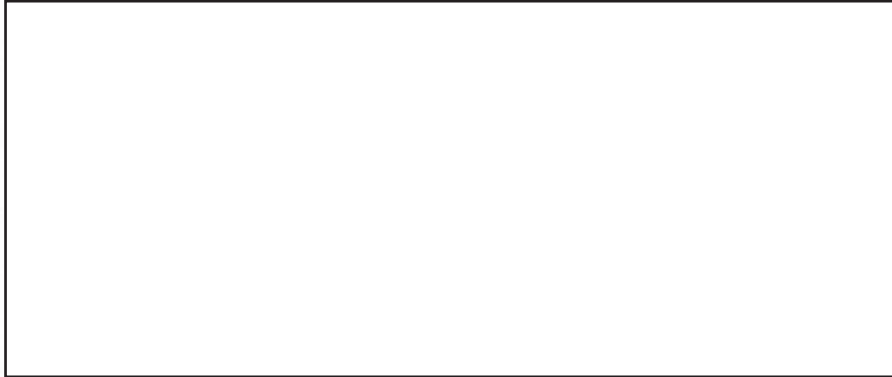
Which landmark would you most like to visit? Why?

**SHAPING A NEW WORLD**

# Ancient Observations

👉 Look in **Shaping a New World**

• Find the case of Clovis points and choose one to draw



• How do you think this point was used? Why?

• Look closely at the atlatl. What materials is it made of? Circle below:

bone

animal hide

feathers

plastic

paper

sinew (tendons)

metal

stone

• The "Trade and Travel" case contains a projectile point made of what material?

• What is the difference between a petroglyph and a pictoglyph?

• What are the four styles of pictoglyphs and petroglyphs found in Washington?

• Design your own petroglyph below. Can your classmate guess what it represents?



## FIND THESE THINGS:

Wooden projectile point

Quartzite knife

Trade beads

Chert point

Fishing weight

Bone rods



# SHAPING A NEW WORLD

WASHINGTON STATE HISTORY MUSEUM. TACOMA, WA